



YOUTH MERIT

Workbook 3

Designed Especially for Children 7 and Over
That Have Completed Workbook 2

GENERAL RULES

Welcome to the Washington State Youth Merit Program! We hope that you will have an enjoyable journey on your trail of learning, earning, and serving. Those enrolled in the program progress at their own pace. The program provides opportunities to develop leadership and public speaking skills as well as skills inside and outside of the equestrian arena. The purpose of the WSH Youth Merit Program is to:

- Offer a program that will satisfy the needs of the current WSH Junior Members and attract new ones to WSH. Our youth are the future of our organization!
- Provide an opportunity for Junior WSH Members to advance and broaden their knowledge of horses.
- Encourage youth to expand their horizons and participate in new activities, both with and without horses.
- Stimulate youth not only to develop new skills, but also to increase their proficiency at those they already possess.
- Recognize activities of youth in their club, school, and community, as well as reward contributions which benefit such organizations.
- Reward, in a tangible fashion, those youth who attain their required level of accomplishment.

FREQUENTLY ASKED QUESTIONS:

How old must one be to participate? To enroll in the program, youth must be 17 years of age or under as of August 1. There is no minimum age requirement at this time.

How do I register? An application form is included in the workbook. Complete the form and return it to either the East Side or West Side Youth Merit Chair (depending upon which side of the mountains you live on). Your registration form must be mailed prior to beginning the program and credit will not be given for tasks accomplished prior to enrolling. Youth must enroll / re-register each year to continue in the program and have their WSH membership paid prior to March 15 to continue earning points.

Is there a cost to register? The program is free to all current Washington State Horsemen youth members.

When can I register? Although the "season" begins August 1, youth may register any time during the year after paying their Washington State Horsemen membership dues.

Who can sign my workbook for the tasks I complete? Adults (preferably not a parent of the youth) are to sign the workbooks verifying that the tasks have been performed satisfactorily. Along with the signature, a date of completion should be included. The adult should include his/her title (show official, club officer, or relationship).

When is my workbook due? Workbooks are due to Zone Youth Merit Advisors (if one has been appointed for your Zone) on or before August 1. If your Zone does not have a Youth Merit Advisor, the workbook must be returned to the East Side or West Side Youth Merit Chair depending upon the side of the State in which you reside. When mailing your workbook to either the East Side or West Side Chair, you must submit the ORIGINAL workbook and only the pages on which tasks were done during the current year. It is highly recommended that you copy the pages you are sending and maintain them until your original is returned to you at the Annual Convention in case the packet is misplaced in the mail. It is further suggested that these be sent Return Receipt Requested to verify arrival. Remember to send in accompanying paperwork for tasks that say "List", "Describe", "Write", "Explain", or "Draw".

What type of awards can be received? Plaques, medallions, t-shirts, jackets, belt buckles, and cash awards are awarded each year to Youth Merit Members. These awards are presented at the Annual WSH Convention. At this age level, many children will likely receive the Participation Award (50 points), Yellow Tag / Certificate of Merit (100 points), Red Tag / Certificate of Excellence (200 points), T-Shirt and Blue Tag / Honor of Excellence (300 points), Bronze Medallion (500 points), Superior Award Jacket (650 points), Silver Medallion (800 points), Supreme Award Belt Buckle (1,000 points), Gold Medallion (1,200 points), and Cash

Awards ranging from \$50 to \$100 (1,400 points and above). Youth unable to attend Convention should designate a representative to obtain the awards on their behalf. Awards will not be mailed to prevent loss.

Do I start over each year on my points? The awards listed previously are given each year to enrolled members based upon their cumulative totals. The points are carried forward into the next year without interruption.

May I repeat tasks each year? Most of the tasks, especially in the later workbooks, are to be answered one-time. Once a Youth Merit Member receives credit for these tasks, they cannot be repeated. Only tasks marked an asterisk (*) may be repeated annually.

How are the tasks separated / numbered? Youth Merit leaders have attempted to separate the tasks into general fields of study. The first number listed in the task is the general field of study (listed below). If the task has just a general field of study number and then one additional number (i.e. 14.10), the additional number simply represents the order in which the tasks were first outlined many years ago in the Task Book. If the task has a general field of study number then two additional numbers (i.e. 7.04.15), the second number is the year in which the task was added to the Youth Merit Program (i.e. 04) and the third number represents the order in which the tasks were first outlined (i.e. 15). Please pay close attention to the task numbers listed as they may have been revised recently.

- 1 - Safety / General Knowledge
- 2 - History / Miscellaneous
- 3 - Health / First Aid
- 4 - Nutrition and Feed
- 5 - Breeds
- 6 - WSH Major Division: Trails and Pleasure (and Packing)
- 7 - Tack and Saddlery
- 8 - Lessons / Clinics (Participation In)
- 9 - WSH Major Division: Western Games
- 10 - WSH Major Division: Horse Show
- 11 - WSH Major Division: Working Horse
- 12 - Zones and Clubs
- 13 - WSH Board of Directors / WSH Convention and Meetings
- 14 - Community
- 15 - School
- 16 - Youth Merit Program
- 17 - Especially for Those 10 and Under
- 18 - Equine Disciplines Found Outside of WSH

Are there additional special awards? Youth Merit has five perpetual trophies given out each year at the Annual WSH Convention. Children may compete for the High Point 10 and Under, High Point 11 to 13 Years of Age, High Point 14 to 17 Years of Age, the Chet Kelley Memorial Award for the most community service points (Sections 14 and 15), or the Del Haack Junior Achievement Award for the most overall points. Points for these awards are based upon NEW points earned each year rather than cumulative points earned over the duration of their membership in the program.



THIS BOOK BELONGS TO:

NAME: _____

ADDRESS: _____

CITY / STATE / ZIP CODE: _____

TELEPHONE: _____ E-MAIL: _____

BIRTHDATE: _____ WSH #: _____ ZONE: _____

YOUR SIGNATURE: _____

PARENT'S SIGNATURE: _____



SAFETY

List 5 safety rules for handling horses on the ground (Task 1.4/ 3 points).

- 1.
- 2.
- 3.
- 4.
- 5.

List 5 safety rules to be observed when riding horses (Task 1.5 / 3 points).

- 1.
- 2.
- 3.
- 4.
- 5.

List 5 safety rules to be observed when driving horses (Task 1.6 / 3 points).

- 1.
- 2.
- 3.
- 4.
- 5.

List 5 safety rules to be observed when riding / driving horses in the company of others (Task 1.7 / 3 points).

- 1.
- 2.
- 3.
- 4.
- 5.

List 5 safety rules regarding the loading / unloading of horses into / from a van or trailer (Task 1.8 / 3 points).

- 1.
- 2.
- 3.
- 4.
- 5.

List 5 safety rules to observe while clipping a horse (Task 1.11 / 3 points).

- 1.
- 2.
- 3.
- 4.
- 5.

List 5 safety rules to observe when lunging a horse (Task 1.12 / 3 points).

- 1.
- 2.
- 3.
- 4.
- 5.

List the purposes of the quick release and the non-slip knots (Task 1.17 / 2 points total):

BREEDS / HORSE HISTORY

5.03.01 Define "breed" (2 points):

2.2 Explain the difference between stock type, hunter type, and saddle type. Name at least one breed commonly considered representative of each type (3 points).

Stock Type -

Hunter Type -

Saddle Type -

2.8 Give a brief history of a specific breed (2 points per breed). If completing more than one breed, please attach a separate piece of paper and turn in with your workbook. Maximum of 10 breeds.

2.9 Name 5 famous horses and why they are well known (4 points).

2.45 What was the earliest ancestor of the horse (1 point)?

2.46 When were horses introduced to the American continent (1 point)?

5.3 Name 5 Light Horse breeds (3 points).

5.4 Name 5 European Sports Horse breeds (3 points).

5.5 Name 5 Draft Horse breeds (3 points).

- 5.8 Give at least 3 conformation characteristics of each (1 point per breed):
- A. Quarter Horse -
 - B. Thoroughbred -
 - C. Arabian -
 - D. Morgan -
 - E. Tennessee Walker -
 - F. Welsh Pony -
 - G. Paso Fino / Peruvian Paso -
 - H. Any other recognized breeds -
- 5.10 What are the 5 registered breeds of the Draft Horse (2 points)?
- 5.11 What is the minimum height and weight for an animal to be considered a draft horse (1 point)?
- 5.12 Which two draft breeds are the most often confused (1 point)?
- 5.13 What Draft Horse originated in a small district in the northwestern part of France known as Perche (1 point)?
- 5.14 Which Draft breed originated in Scotland (1 point)?
- 5.15 Why were they originally bred (2 points)?
- 5.16 How is the Draft Driving Only Class judged (2 points)?
- 5.17 For a Draft Horse Halter Class, how are manes and tails presented (1 point)?
- 5.18 What is the breed that originated in Wales (1 point)?
- 5.19 How many different sections are there of the breed (1 point)?

- 5.20 What are they (1 point each)?
- 5.21 What colors does the Welsh Cob come in (1 point)?
- 5.22 What is the upper height limit for the Welsh Cob (1 point)?
- 5.23 In its native country there are over 8,000 animals registered with the breed each year, how many animals are registered with the U.S. society each year (1 point)?
- 5.24 Describe the gaits of the walking horse and how they differ from non-gaited horses (2 points).
- 5.25 What were walking horses used for originally (1 point)?
- 5.26 What is the average height, weight and common colors of the Tennessee Walking horse (1 point each)?
- 5.27 What is the temperament of the Tennessee Walker (1 point each)?
- 5.28 Tennessee Walking Horses are a product of what other breeds (2 points)?
- 5.29 What are donkey (1 point)?
- 5.30 Is a Palomino a breed? Why / Why Not? 1 point.
- 5.31 Where did the Quarter Horse get the name (1 point)?

5.32 What is a Thoroughbred (1 point)?

5.33 Who was Justin Morgan (1 point)?

5.03.02 Name two breeds that originated in the United States (1 point).

5.03.03 What breed is considered to be the oldest (Hint: It is not from the U.S.)? (1 point).

5.03.04 What are the three Paint Horse color patterns? (1 point)

5.03.05 Describe the difference between the three Paint Horse color patterns (2 points).

HORSE HEALTH

The following tasks deal with the health of horses. Your veterinarian may be a good resource for answering many of the questions.

- 3.5a List the signs of a healthy horse (1 point each).

- 3.6 List the potential causes of unsoundness in horses (1 point each).

- 3.7 Describe what it means to founder and give causes (1 point each).

- 3.8 Describe the symptoms of dehydration in horses. Outline a proper course of treatment (5 points).

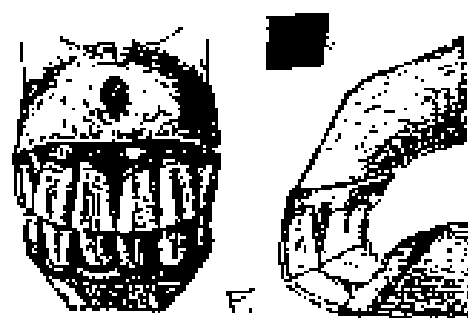
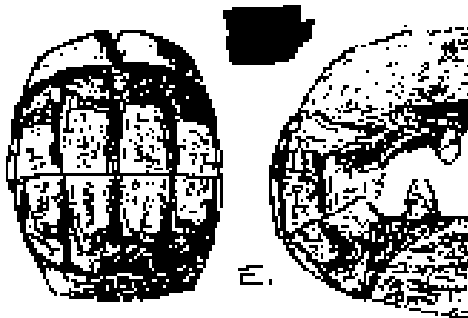
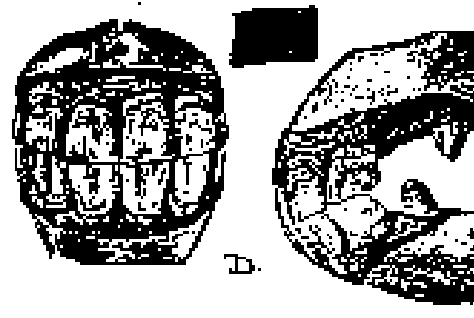
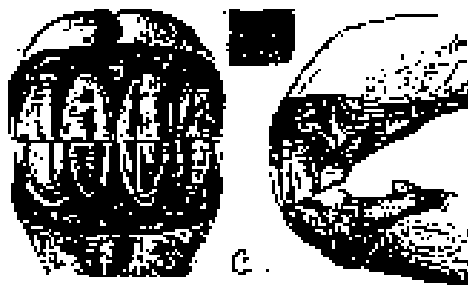
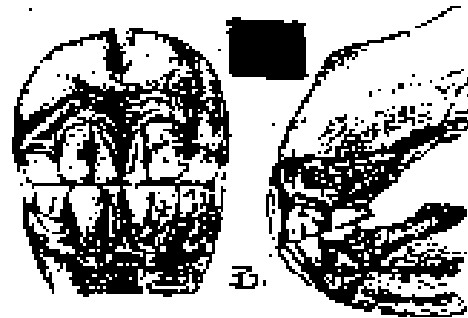
- 3.9 Describe cribbing and give ways of controlling it (2 points).

- 3.13 Name common equine diseases and describe each (1 point each).

- 3.14 Describe conformation faults and how they limit a horse's performance (1 point each).

- 3.14a Describe what EPM is and how it is transmitted (2 points).

3.10 As a horse ages, the size and look of his teeth change. Below is a front and side view of a horse's teeth at different ages. Using the list below, match the diagram with the correct age. Correct completion of this page - 4 points.



- Five Years _____
- Three Years _____
- Fifteen Years _____
- One Year _____
- Four Years _____
- Seven Years _____

- 3.14b Give the reason why horses need a Coggins test / what disease is it checking for (1 point).
- 3.14c Participate in a foal watch (2 points). Have an authorized person sign here and date.
Date _____ Signed by _____
- 3.14d Perform a foaling test (2 points). Have an authorized person sign here and date.
Date _____ Signed by _____
- 3.14e What is another name for EIA (1 point)?
- 3.14f What does EIA stand for (1 point)?
- 3.15 List the names of 4 internal parasites (4 points).
- 3.16 Explain their effects on the horse (2 points).
- 3.17 Describe the life cycle of parasites (2 points).
- 3.18 List the names of 5 external parasites (4 points).
- 3.19 Explain their effects on the horse (2 points).
- 3.20 List how to recognize their presence and how they affect the horse (2 points).
- 3.21 Describe how to get control of them (2 points).
- 3.35 Interview a veterinarian regarding an appropriate program for horses for one year. Give a written description of the program (4 points).

- 3.36 Interview a veterinarian regarding a strategic immunization program for horses for one year (feeding, training, exercise). Include a copy of your findings (4 points).
- 3.37 Present a written plan for worming, shoeing, and vaccinating a horse for one year. Give the name of the horse (4 points).
- 3.39 Describe how to give a horse a shot (2 points).
- 3.41 Describe how to draw blood from a horse (2 points).
- 3.43 Explain floating the teeth and why it is necessary (2 points).
- 3.45 Explain a common treatment for minor cuts (1 point).
- 3.47 Explain what to do if a horse cuts itself severely (2 points).
- 3.50 Spend time with a vet and make a list of what you learned or what you watched (2 points each with a maximum of 10 items). Include on a separate piece of paper.
- 3.51 Give reasons why a horse is given a liniment bath (1 point each).
- 3.53 Explain what sand colic is and potential problems (2 points).
- 3.54 List ways to prevent colic (1 point each).
- 3.60 Describe the appropriate method of poulticing a horse's foot (2 points).

3.64 What is an abscess (1 point)?

3.65 List the causes and treatments for abscesses (1 point each).

3.66 Describe and define stone bruises (1 point).

3.67 What are some common causes of stone bruises (1 point each)?

3.68 Describe and define laminitis (1 point).

3.69 What are common causes of laminitis (1 point each)?

3.03.01 Describe monocular vision (1 point).

3.03.02 Describe binocular vision (1 point).

3.03.03 Explain how a horse sees a close or distant object (2 points).

3.03.04 Identify two areas (blind spots) where the horse cannot see objects (1 point).

3.03.05 What is an "A.I."? (1 point).

3.03.06 What is the percent of an AI coming out as twins in the first 32 days? (1 point)

3.04.01 Describe 3 things a horse does when it is afraid (2 points).

- 1.
- 2.
- 3.

3.04.02 / 2 points for every 5 listed (maximum of 5). List some common terms associated with unsoundness (which is any deviation in structure or function that interferes with the intended use of a horse).

3.04.03 List the three most sensitive areas of touch on the horse's body (1 point).

- 1.
- 2.
- 3.

3.04.04 List four other sensitive areas of touch on the horse's body (1 point).

- 1.
- 2.
- 3.
- 4.

3.04.05 Define the term "Flexion" (Task 3.04.05 / 1 point).

3.04.11 How do horses become infected with the West Nile Virus? (2 points).

3.04.12 How does the West Nile Virus kill a horse? (2 points).

3.04.15 What is the treatment for a horse infected with the West Nile Virus? (2 points).

3.04.27 What is "Cushings" Disease? (2 points).

4.1 Interview a veterinarian regarding horse nutritional needs (4 points). Have them date and sign here: Date _____ Signed by _____

- 4.2 List the vitamins and minerals horses require for good health (3 points).
- 4.3 List and describe different weeds toxic to horses (1 point each).
- 4.4 Show samples of weedy / moldy hay and good hay (2 points). Please list the date here along with an authorized signature: Date _____ Signed by _____
- 4.5 List and describe different grains suitable for horses (1 point each).
- 4.7 List some advantages and disadvantages of a grass kept horse (1 point each).
- 4.8 List types of hay and their pros and cons (1 point each).
- 4.6 Research and report on the different nutritional needs of -
- a. Pleasure horses doing light or medium work.
 - b. Horses training for an endurance race.
 - c. Pregnant or nursing mares.
 - d. Breeding stallions.
 - e. Immature young stock or
 - f. Any other types you think of.
- 4.9 List the following in order of importance - hay, grain, water (2 points).

4.10 How many gallons of water on averages does a horse drink a day (1 point).

4.11 What is the best source of Vitamin D available to your horse (1 point)?

4.12 What mineral is necessary for proper bone growth and development in foals (1 point)?

4.03.01 Define roughage (1 point).

4.03.02 Define concentrates (1 point).

4.03.03 List the order in which food travels through a horse's digestive system (2 points).

4.03.04 Name four types of hay (2 points).

3.17.01 Name some alternative medicine practices for horses (1 point each / [Previously 9.14a](#)).



HORSESHOEING

Horseshoeing is a vital part of a horse's health, especially their feet and legs. Your farrier (horseshoer) may be able to help you with some of the following questions.

- 3.56 Spend time with a farrier and make a list of things you learned or what you watched being done on a separate piece of paper (2 points each, maximum of 10 items).
- 3.57 Interview a farrier regarding maintaining healthy feet (4 points). Date _____ Initial _____
- 3.58 Name different tools a farrier would use to shoe a horse (1 point each, maximum of 10 items).

- 3.59 List the different kinds of horseshoes and the purposes of each (1 point each / 5 points max).

- 3.70 What are some things a farrier needs to know before shoeing your horse (2 points)?

- 3.71 Why are horseshoes used (1 point)?

- 3.72 What are some of the most difficult things to learn in shoeing a horse (2 points)?

- 3.73 How often should shoeing be done on a horse (1 point)?
- 3.74 In what way can you make sure your horse has healthy feet (1 point)?

- 3.17.02 Describe in detail the evolution of the hoof (1 point / [Previously 4.14](#)).

TACK

The correct tack is needed for riding safely. A good source of information for these tasks might be your local western store / tack dealer.

7.4 List how to select a saddle that fits your horse (1 point each).

7.5 List how to select a saddle that fits you (1 point each).

7.6a Describe how to measure an English saddle (2 points).

7.6b Describe how to measure a Western saddle (2 points).

7.9 Learn the differences between the four major families of bits (snaffle, curb, pelham, and hackamore-bitless). List the differences (1 point each).

7.10 Name a sample of different types and describe their action. Name the activity for which it is used (1 point each).

7.11 Draw an example of each bit described in 7.9 (1 point each).

7.24 Draw a bosal and describe its use (1 point).

7.25 List the dangers of having a broken saddle tree (1 point each).

7.26 List the different martingales (1 point each).

7.27 List the purpose of each (1 point each).

7.28 List the types of horse blankets and when they are used (1 point each).

7.29 List the different kinds of English girths (1 point each).

7.30 List different kinds of reins (1 point each).

7.31 Explain how they are held (1 point each).

7.03.01 Define the term "bight" (1 point).

7.32 Name different kinds of boots used in horse sporting events: jumping, polo, etc. (1 point each / maximum of 5 boot types).

7.33 How are they used (1 point each)?

7.17.01 List the different kinds of nosebands and their purpose (1 point each / [Previously 9.25d](#)).

7.34 Draw the different types of hobbles and how they are used (1 point each).

7.35 Name the types of bandages and when they are used - exercise, stable, trailering, riding, etc. (1 point each).

8.15 Name types of two-wheeled horse-drawn vehicles (1 point each / maximum of 5).

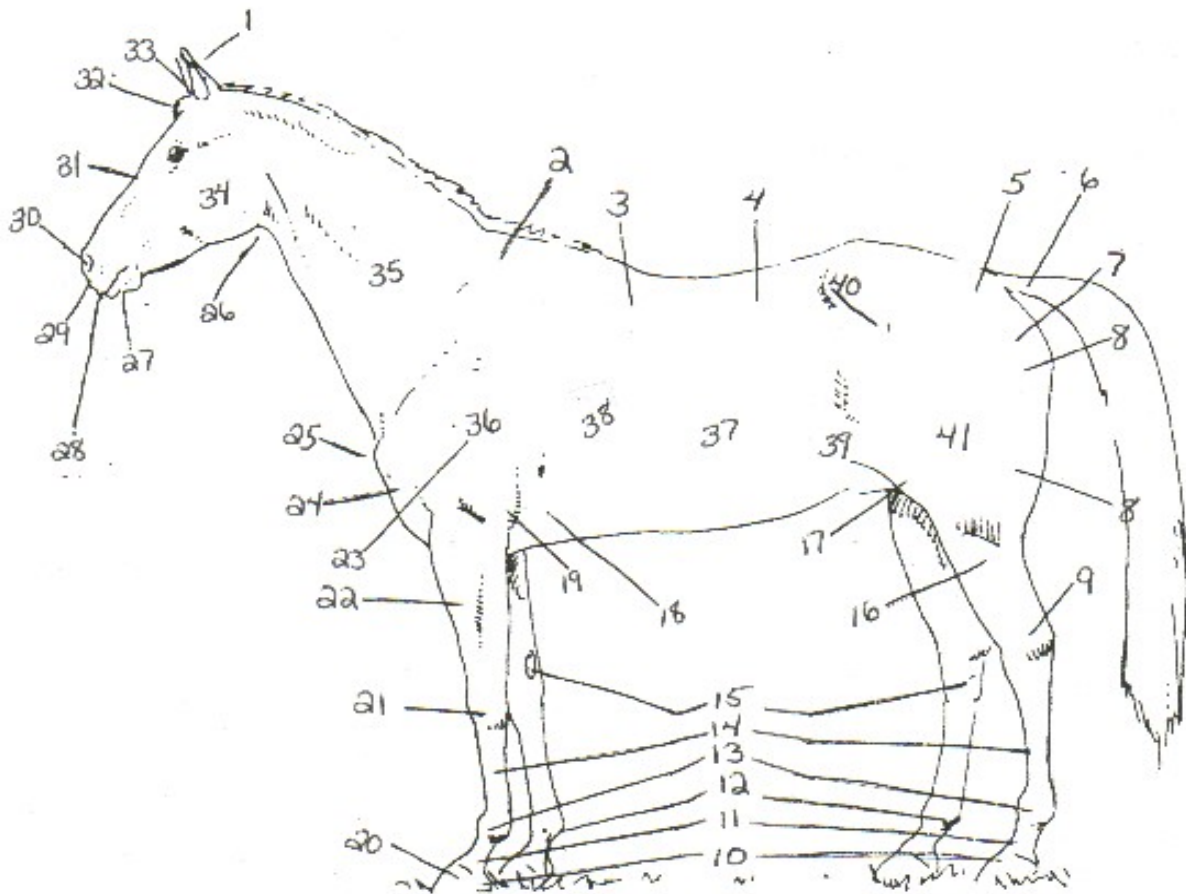
8.16 Name types of four-wheeled horse-drawn vehicles (1 point each/ maximum of 5).

2.19 List different types of twitches and how they are used (1 point each / maximum of 5).

2.20 Explain the proper way to use a twitch (1 point).

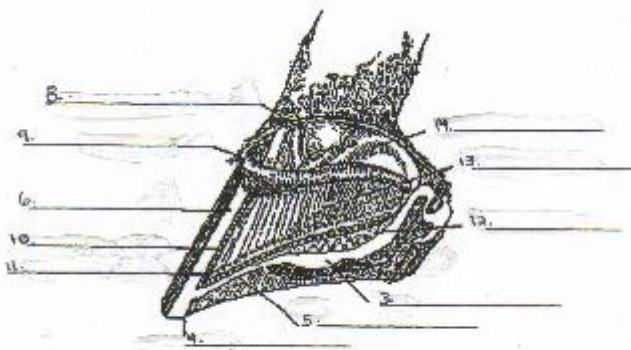
NAME THE PARTS

Fill in the horse parts (Task 3.11). For every 5 parts of the horse learned, you'll receive one point.



- | | | |
|-----------|-----------|-----------|
| 1. _____ | 15. _____ | 29. _____ |
| 2. _____ | 16. _____ | 30. _____ |
| 3. _____ | 17. _____ | 31. _____ |
| 4. _____ | 18. _____ | 32. _____ |
| 5. _____ | 19. _____ | 33. _____ |
| 6. _____ | 20. _____ | 34. _____ |
| 7. _____ | 21. _____ | 35. _____ |
| 8. _____ | 22. _____ | 36. _____ |
| 9. _____ | 23. _____ | 37. _____ |
| 10. _____ | 24. _____ | 38. _____ |
| 11. _____ | 25. _____ | 39. _____ |
| 12. _____ | 26. _____ | 40. _____ |
| 13. _____ | 27. _____ | 41. _____ |
| 14. _____ | 28. _____ | |

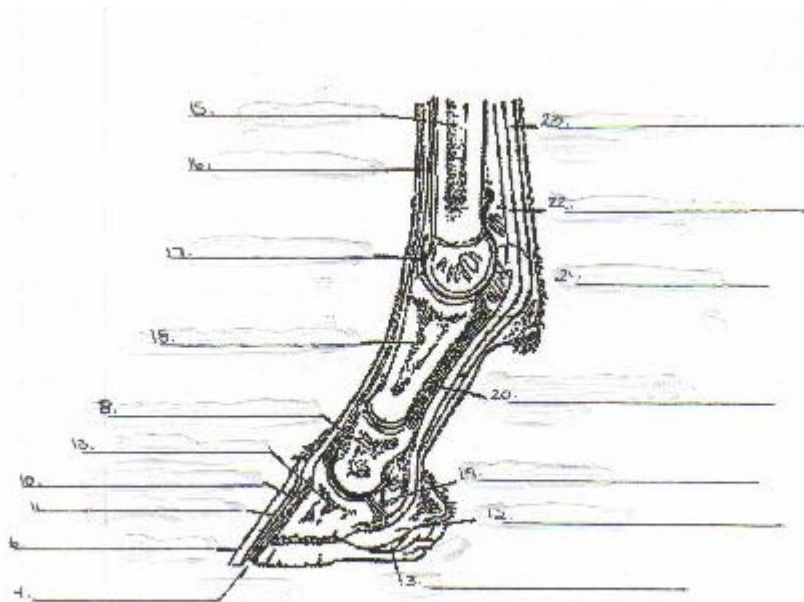
Fill in the equine bone parts (Task 3.12). For every 5 bones in the equine foot learned, you'll receive two points.



CUT AWAY SIDE VIEW OF THE FOOT

3. _____
4. _____
5. _____
6. _____
8. _____
9. _____
10. _____
11. _____
12. _____
13. _____
14. _____

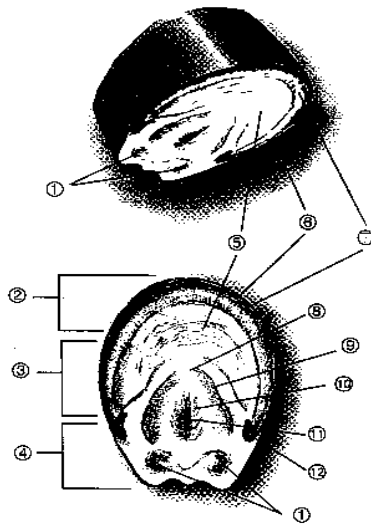
Draw and label the parts of a bone (Task 3.55a). You will receive 2 points for every bone drawn and completed. Please list the proper name of the bone.



LONGITUDINAL SECTION OF FETLOCK & FOOT

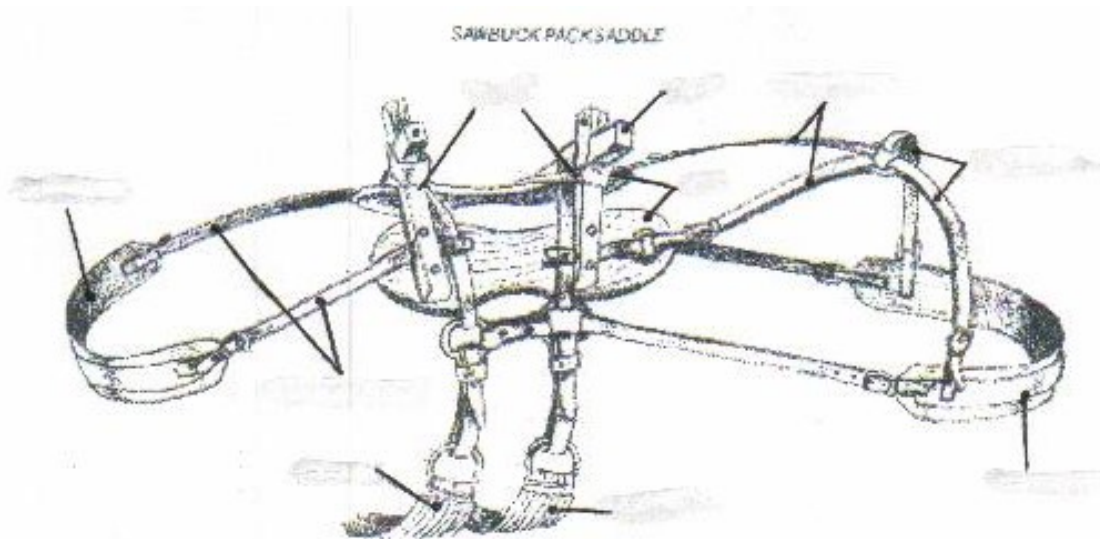
3. _____
4. _____
6. _____
8. _____
10. _____
11. _____
12. _____
13. _____
15. _____
16. _____
17. _____
18. _____
19. _____
20. _____
21. _____
22. _____
23. _____

Draw and label (Task 4.13) different types of hooves (1 point each).



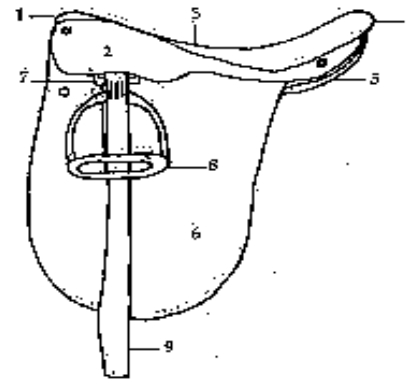
- | | |
|----------|-----------|
| 1. _____ | 7. _____ |
| 2. _____ | 8. _____ |
| 3. _____ | 9. _____ |
| 4. _____ | 10. _____ |
| 5. _____ | 11. _____ |
| 6. _____ | 12. _____ |

Learn and list (Task 6.32) all the parts of a Pack saddle (3 points).

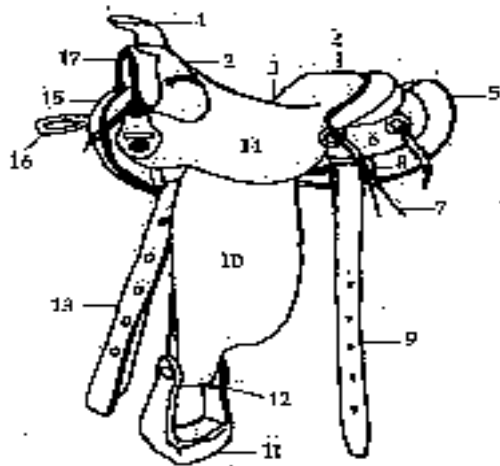


Learn and list (Task 7.1) all the parts of an English saddle (3 points).

- | | |
|----------|----------|
| 1. _____ | 6. _____ |
| 2. _____ | 7. _____ |
| 3. _____ | 8. _____ |
| 4. _____ | 9. _____ |
| 5. _____ | |



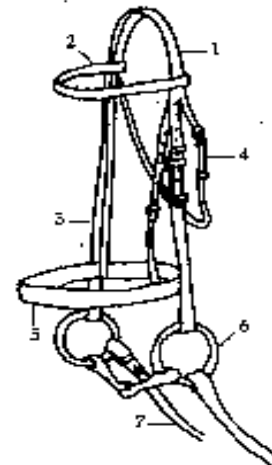
Learn and list (Task 7.2) all the parts of a Western saddle (3 points).



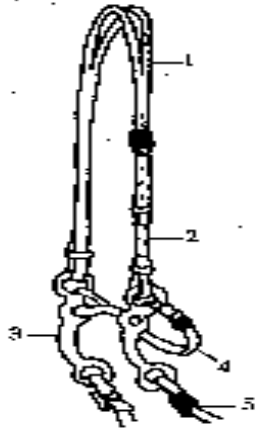
- | | |
|----------|-----------|
| 1. _____ | 10. _____ |
| 2. _____ | 11. _____ |
| 3. _____ | 12. _____ |
| 4. _____ | 13. _____ |
| 5. _____ | 14. _____ |
| 6. _____ | 15. _____ |
| 7. _____ | 16. _____ |
| 8. _____ | 17. _____ |
| 9. _____ | |

Learn and list (Task 7.12) all the parts of an English bridle (2 points).

1. _____
2. _____
3. _____
4. _____
5. _____
6. _____
7. _____

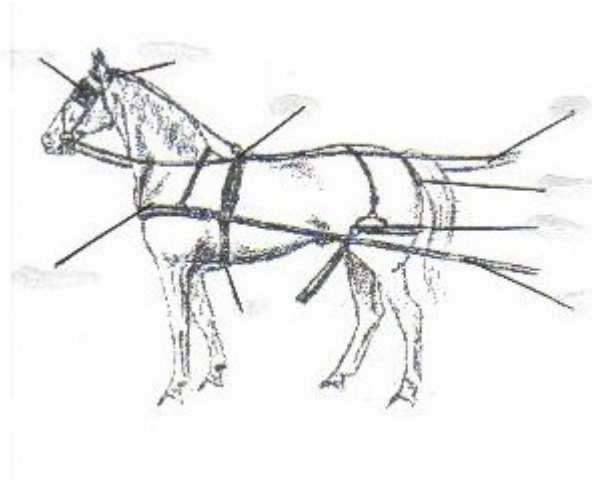


Learn and list (Task 7.13) all the parts of a Western bridle (2 points).

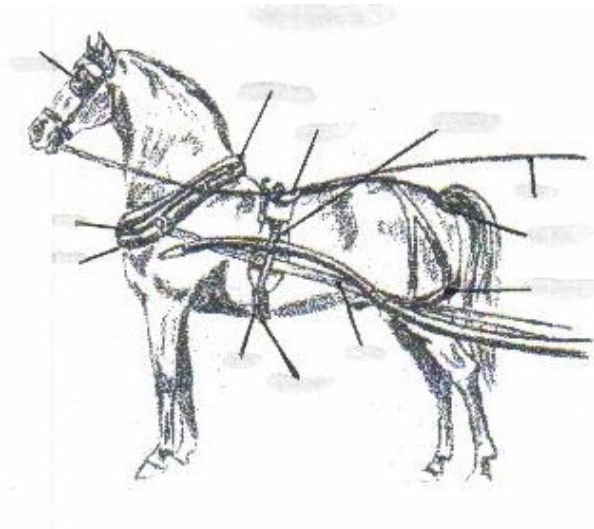


1. _____
2. _____
3. _____
4. _____
5. _____

Learn and list (Task 8.12) all the parts of a light harness (4 points).



Learn and list (Task 8.13) all the parts of a heavy (work) harness (4 points).



CONSERVATION DISTRICT

3.22	What is a Conservation District?	1 point
3.23	List the telephone numbers for the Washington State Conservation Commission and your local Conservation District.	5 points
3.24	Call your local Conservation District to find out about projects they are working on.	3 points
3.25*	Attend your local Conservation District meeting. Date _____ Initial _____. Maximum of once per year.	2 points
3.27*	List the Best Management Practice's that improve farm health and management. Repeatable for different farms.	2 points each
3.28	Define the term "sacrifice area" and explain how it would affect your farm.	5 points
3.29	List 4 kinds of fencing and give pros and cons for each. Fence 1 – Fence 2 – Fence 3 – Fence 4 –	1 point each
3.30	How does cross fencing improve pastures?	3 points
3.31	Why should manure piles be covered?	3 points
3.32	Explain what composting is.	3 points

3.33	How is composted manure used?	2 points
3.34	Design a compost bin. Include a copy of the design with your workbook.	3 points
3.34a	Should fences have something bright on them so horses can see them? Why / Why Not?	1 point
3.34b	Would barbed wire be a good arena fence? Why / Why Not?	1 point

DRIVING AND GAITS

8.1 Name the four natural gates of a horse (2 points).

8.2 List natural aids and artificial aids used in riding (1 point each / maximum of 5).

8.3 List natural aids and artificial aids used in driving (1 point each / maximum of 5).

8.19 Define these gaits (3 points):

Slow Gait -

Rack -

Pace -

Fox Trot -

Paso Largo -

HORSE SHOW DIVISION

The Horse Show Division is just one of the Divisions within the Washington State Horsemen. Here are some Division-specific tasks for you to complete. Please write in a "Yes" or a "No" answer along with the Chapter, Rule, Article, Section, and page Number where you found the rule.

- 10.3 May a judge call for a change of direction at a canter in Advanced English Pleasure Class (2 points)?
Yes / No ___ Rule # ___ Section # ___ Article # ___ Page #
- 10.4 May a blood bay horse be shown in a Color English Pleasure Class (2 points)?
Yes / No ___ Rule # ___ Section # ___ Article # ___ Page #
- 10.5 In a lead-line class, riders 6 and under, one participant demands to ride without being led. The leader turns the child loose. The pony does not seem to mind and continues around the ring at a walk. Do you eliminate this entry (2 points)?
Yes / No ___ Rule # ___ Section # ___ Article # ___ Page #
- 10.6 May a horse with intermediate gaits be cantered / loped in a Jack Benny Pleasure Class (2 points)?
Yes / No ___ Rule # ___ Section # ___ Article # ___ Page #
- 10.7 May Hunt Seat and Saddle Seat Equitation Classes be combined (2 points)?
Yes / No ___ Rule # ___ Section # ___ Article # ___ Page #
- 10.8 Read the rules for a show or other competitive event. List competitive etiquette (1 point each).
- 10.9 List the proper tack and personal appointments for a performance, driving, gaming or dressage class (1 point each).
- 10.10 You as a judge's applicant must be how old to apply (1 point)?
Answer:
- 10.11 How old to receive a judge's card (1 point)?
Answer: ___ Rule # ___ Section # ___ Article # ___ Page #
- 10.12 Must you as a judge's applicant be a WSH and AHSA member (1 point)?
Yes / No ___ Rule # ___ Section # ___ Article # ___ Page #
- 10.13 If so, for how long (1 point)?
Answer:
- 10.14 What ranking judge can you "learner" judge with (1 point)?
Answer:
- 10.15 Do you as a learner judge have to take a written test (1 point)?
Yes / No
- 10.16 An oral test (1 point)?
Yes / No
- 10.17 How long does a learner judge have to complete the program (1 point)?
Answer:

9.25b Describe the acceptable dress for a discipline (1 point per discipline).

9.64 Name and list (or draw) Hunter fences (1 point each).

9.65 Name and list (or draw) those obstacles allowed only for Jumpers (1 point each).

9.67a List allowed cross-country jumps (1 point each).

9.67b What is another name for the show jumping phase of an event (1 point)?

9.04.01 Define the following terms used in judging (3 points) -

Aligned -

Balance -

Correctness -

Purity -

Scope -

Smoothness -

Straightness -

GAMES DIVISION

The Games Division is another one of the Divisions within the Washington State Horsemen. Here are some Division-specific tasks for you to complete.

- 9.33 For what reasons can a rider receive a re-ride (1 point)?
- 9.34 In what situation can a Steward judge an event (1 point)?
- 9.35 What are the criteria to become an "A" rated horse in an individual event (2 points)?
- 9.39 When the first timer's clock fails, and the second timer's stopwatch must be used, what number is recorded in the thousandths space on the arena sheet (1 point)?
- 9.40 When a record is broken, what five people must sign the record-breaking sheet (1 point)?
- 9.41 Horses will have to run ____ times in a faster time classification before reclassification upward will occur. Does the horse move up immediately (1 point)?
- 9.42 In Rescue Race, the judge will consider the mounting rider mounted when what occurs (1 point)?
- 9.43 In what event are stallions prohibited (1 point)?
- 9.44 In team events, how many seconds are added for each knocked down stake, pole, or barrel (1 point)?
- 9.45 In Team Poles and Team Baton, a special piece of equipment is used that is not used in any other events. What is the name of this piece of equipment (1 point)?
- 9.47 On what date do judges' and timers' cards expire each year (1 point)?
- 9.48 How many years must a judge be certified prior to assisting a student judge (1 point)?
- 9.49 How old must a youth be to obtain a judge's card (1 point)?

9.46 On an arena sheet what do the following initials stand for? List the initials and the proper judge's call next to them (2 points).

A/O/E -

F/S -

NT -

OC -

U/R -

W/W/P -

2/H/O/C -

+5 -

9.50 How old is a Leadline Rider? Buckaroo Rider? Junior Rider? Intermediate Rider? Which age group do you compete in currently (2 points)?

9.51 What award does a repeat supreme champion horse receive and who has the authority to order the award (1 point)?

9.52 How many individuals receive invitations to the Washington State Championship Show in Junior Barrels (1 point)?

9.53 Which weekend is the Washington State Championship Show (1 point)?

9.54 What year did the Games Division have a group of riders leave the organization and create a separate organization (1 point)?

9.56 Make a list that shows the current records in each event, the times, and who holds the record (horse and rider). List must be given to the chairman of a show committee for display at an approved WSH Games show. List must be neat, easily read, and protected from the elements (3 points). Have Show Chair initial and date here _____.

9.57 Design and complete a poster advertising local show dates. Once approved for correctness by your Zone Games Chair, contact a store in which the poster can be displayed for the current season, and deliver to them (5 points). Have the Games Chair initial and date here _____.

9.59a How many seconds does a rider (other than in cowhide) have to start onto a course after being given the green flag by the judge (1 point)?

9.59b* Where is the Washington State Championship Show being held this year (1 point)?

9.59f If a flag staff breaks in two, which half must make it into the barrel (1 point)?

9.59g Take the student timer's test. If you pass (5 points), if you do not pass (2 points). Have the clinician date and sign here _____.

9.59k List the times required to become "A" in each of the individual events (1 point).

Barrels -

Keyhole -

California Stake -

Keyrace -

Figure 8 -

Poles -

Flags -

9.59l List the records in each 2 Man and 4 Man team events (1 point).

Cowhide Race -

Bareback Relay -

Rescue Race -

Team Baton -

Two Man 3 Barrel -

Team Flags -

Two Man Stake -

Team Poles -

9.59m List the records in each individual event in the junior division only (1 point).

Barrels -

Keyhole -

California Stake -

Keyrace -

Figure 8 -

Poles -

Flags -

9.59n List reasons why it is unsafe to run on hard ground (2 points for every 5 reasons).

9.59o Can you run two lines in an arena (1 point)?

9.59p What are pole bases made of (1 point)?

9.59q How many pounds of sand must be in the bottom of the barrels used for barrel racing (1 point)?

9.59r How much dirt (in inches) should be in the bottom of the flag barrel (1 point).

TRAILS / PACKING

Trails and Pleasure is another Division within the Washington State Horsemen. Here are some Division-specific tasks for you to complete.

- 6.1 What should you look for in selecting a pack horse (1 point each)?
- 6.2 What are the tools of a packer's trade (1 point each)?
- 6.3 Name different types of pack saddles (1 point each).
- 6.4 What are the types of ties used to secure a load for packing a horse called (1 point)?
- 6.5 What type of setup would you use on your western riding saddle to make it a pack outfit (1 point)?
- 6.6 What is a mantie (1 point)?
- 6.7 Is it important to weight your pack boxes or load? Why (1 point)?
- 6.8 What should you take on a pack trip (1 point each)?
- 6.9 Should you tie your pack horse to your riding saddle (1 point)?
- 6.10 Is the tinder-dry wilderness trail a smoker's friend (1 point)?
- 6.11 Is it all right to cut switch backs when trail riding (1 point)?
- 6.12 What equipment is used to turn your horse out to graze in a meadow (1 point)?
- 6.13 When you put up a picket line do you just tie a rope to a tree (1 point)?

6.14 Why use a tree saver strap (1 point)?

6.03.01 When riding, one is to keep to which side of the road (except when passing)? 1 point.

6.19 Draw a trail course and give dimensions for all obstacles on a separate piece of paper (2 points).

6.20 List the names and addresses of the regulatory agencies that control trails. Explain how to learn the location of riding trails (1 point / agency - maximum of 5).

6.21 Name some trails in your area (1 point per location / maximum of 5).

6.22 When riding down a steep hill, you should have what body positioning on the horse (1 point)?

6.23 When crossing a creek, what should you do for your horse and if you are riding with someone else (2 points)?

6.24 Should you allow your horse to run up a hill (1 point)?

6.25 What should you tie up your horse with (1 point)?

6.26 When overtaking riders on the trail ahead of you what should you do (1 point)?

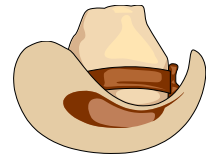
6.27 What should you carry with you on a day trail ride (1 point each / maximum of 15)?

DRESSAGE / COMBINED TRAINING

- 9.70 Define and give a brief history of Dressage (5 points).
- 9.72 Explain what a 2-day event is and list what occurs on each of the days (2 points).
- 9.73 Make up and write out a Dressage test on a separate piece of paper (2 points).
- 9.75 What does the sentence "She has no basic seat" mean in Dressage? (1 point)
- 9.76 After the bell sounds, how long does an exhibitor have to ride into the arena in Dressage? (1 point)
- 9.77 Describe legal spurs for Dressage (1 point).
- 9.78 What type / breed of horse may be used for Dressage? (1 point)
- 9.79 Where would you go to find which bits are legal for Dressage? (1 point)
- 9.80 How long may a Dressage whip, including the lash be? (1 point)
- 9.81 Which type of nosebands are legal with a double bridle in Dressage? (1 point)
- 9.82 May Dressage horses have ribbons / flowers in their manes and tails? (1 point)
- 9.83 When must protective headgear be worn? (1 point)

- 9.84 What is an INQUIRY? (1 point)
- 9.85 May a rider wear blue jeans while riding cross country (1 point)?
- 9.86 What is "Unauthorized Assistance" (1 point)?
- 9.87 A combined Training competitor knows he is on course by (1 point)?
- 9.88 How long may a Junior rider compete as a Junior (1 point)?
- 9.89a Name the organization that is devoted especially to Dressage (1 point)
- 9.90 Name the organization that is devoted especially to Combined Training (1 point).
- 9.91 What is the only 4-Star event in the United States (1 point)?
- 9.92 What are the levels of eventing (2 points)?
- 9.93 What are the levels of Dressage? (2 points)
- 9.94 Name the 2016 Olympic team members for Dressage, Combined Training, and Show Jumping (1 point per event).
- 9.95 Name 4 different canters (1 point).
- 9.96 How many beats to the rein-back? (1 point)
- 9.97 When must a competitor ride with a double bridle in Dressage? (1 point)

NON WSH DISCIPLINES



PROFESSIONAL RODEO -

18.04.02 In riding events, what percentage is based upon the contestant's performance and what percentage is based off of the animal's efforts by the judges? (1 point).

18.04.05 What is the penalty for a "broken barrier"? (1 point).

18.04.06 Define the following rodeo "money" terms (3 points) –

Added Money -

Day Money -

Entry Fee -

Ground Money -

Jackpot -

Mount Money -

Prize Money -

18.04.07 Define the following rodeo terms (2 points) –

Average -

Association Saddle -

Flank Strap -

Go Round -

One-Header -

18.04.08 Define the following "roping" terms (5 points) –

Barrier -

Breaking the Barrier -

Dally -

Fishing -

Hazer -

Honda -

Hooey -

Lap and Tap -

Pigging String -

Score -

DRAG HUNTING -



18.04.09 What is drag hunting? (2 points)

18.04.10 What is a "line" in drag hunting? (1 point)

18.04.11 Name some natural obstacles found on a "line". (1 point)

18.04.12 Why is drag hunting considered a spectator sport while fox hunting is not? (2 points)

GETTING TO KNOW W.S.H.

We belong to a great and wonderful organization called the Washington State Horsemen. How much do you know about the BIG "club" you belong to?

Name the current WSH President (Task 13.7 / 1 point).

Name the current WSH Vice President (Task 13.8 / 1 point).

Name the other WSH Officers (Task 13.9 / 1 point each).

List the nine WSH Zones (Task 13.10 / 2 points total).

C _____
C _____
N _____
N _____
N _____

O _____
P _____
P _____
Z _____

Name the Zone Directors (13.11a* / 2 points).

Position #1 _____
Position #2 _____
Position #3 _____
Position #4 _____
Position #5 _____

Position #6 _____
Position #7 _____
Position #8 _____
Position #9 _____

State the duties of a Zone Director (13.11b / 2 points).

Describe how a resolution gets to the WSH Board of Directors (Task 13.12 / 2 points).

Name your Zone's President, Vice President, Secretary, and Treasurer (13.9a* / 1 point each).



GOT AN IDEA ?



The Youth Merit Program continues to increase its task questions through new questions submitted by youth just like you. If you have not seen a question in the workbook that you think would be a great question next year, please list it below. You will also have to have the answer and where you found the question and answer. Each idea is worth one point (Task 16.2) and you can list up to ten new questions each year.

QUESTION:
ANSWER:
SOURCE:

QUESTION:
ANSWER:
SOURCE:

QUESTION:
ANSWER:
SOURCE:

QUESTION:
ANSWER:
SOURCE:

QUESTION:
ANSWER:
SOURCE:

QUESTION:
ANSWER:
SOURCE:

QUESTION:
ANSWER:
SOURCE:

QUESTION:
ANSWER:
SOURCE:

If you are submitting the full ten, please write the last two on a separate piece of paper and submit with your workbook. Thank you...great job!

OTHER TASKS TO ANSWER

You are doing so well! Here are some more tasks to do. For those items with a "\$" sign, please include the actual list / description / etc. with your workbook when turning it in.

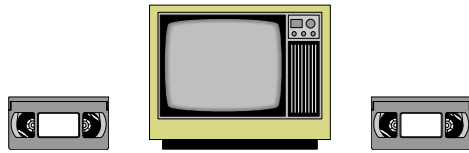
1.1* / \$	Post near the telephone a list of emergency numbers for your family and emergency numbers for your horse.	2 points / year
1.3* / \$	Make a safety checklist for horse trailer or van.	2 points / year
2.13	Describe how to properly thin / pull / trim a mane and tail. Thin – Pull – Trim –	2 points each
2.18	Write the pros and cons of body clipping. List the different types of clips.	2 points each (5 types maximum)
2.33	Describe weaving.	1 point
2.34	Describe barn sour.	1 point
2.35	Describe ring sour.	1 point
2.36	List and describe other equine vices.	1 point each (maximum of 5 vices)
3.4a / \$	Interview a trainer on their daily routine. Give a written summary.	2 points
5.34	What was the purpose for the fox hunt?	1 point

5.35	<p>What are the different horse breed brands / freeze markings? Draw the brand / marking near the breed.</p> <p>Arabian Appaloosa American Miniature Arab – Half American Performance AQHA (Reg # Under 1 Million) AQHA (Reg # 1 Million +) AQHA (Reg # 2 Million +) AQHA (Reg # 3 Million +)</p> <p>Racking Missouri Fox Trotter Standardbred Thoroughbred Tennessee Walker American Warmblood Morgan Paint</p>	1 point each
5.36	<p>What does each symbol of the brand stand for? Draw the full brand and label.</p>	3 points
9.15	<p>List at least 5 rules of polo. For every five rules you receive 3 points.</p>	3 points / 5
9.17	<p>List show management positions and state their duties.</p>	1 point each



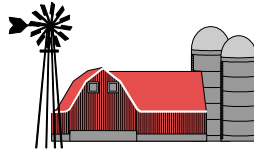
The following tasks are "hands-on" which means that someone will need to watch you do them correctly. Once you have completed the task, make sure to have someone sign your workbook and date the item. If you have completed any of these in Workbook 2, they may not be recorded again unless noted below with an asterisk.

1.2*	Discuss a fire prevention plan for a stable / barn (maximum of once per year).	2 points / year
1.16	Demonstrate how to safely load and unload a horse from a trailer: slant load and straight load.	2 points each
2.14	Demonstrate how to properly thin / pull / trim a mane and tail.	2 points each
2.15	Demonstrate a method of laying a mane.	2 points
2.16	Demonstrate the way to braid a mane / tail for maintenance.	2 points
2.17	Demonstrate the proper way to trim a horse with clippers (head and legs).	2 points
2.32	Help imprint a foal.	5 points
2.37	Demonstrate how to groom a horse.	2 points
2.38	Demonstrate how to properly use leg wraps for trailering.	1 point
2.42	Teach or help teach a young horse basic skills.	4 points
3.2*	Make an equine first aid kit, check yearly.	4 points / year
3.42	Demonstrate the proper way to measure a horse's pulse, temperature and respiratory rate. Be able to compare stressed and normal rates.	4 points each
3.46	Demonstrate how to clean and dress a horse's wound.	2 points
3.52	Demonstrate how to give a horse a liniment bath.	2 points
3.55	Demonstrate how to properly wrap an injured leg.	2 points
3.61	Demonstrate how to poultice a horse's foot.	4 points
3.63	Demonstrate how and when to soak a horse's foot in Epsom salts.	2 points
3.03.07	Observe a veterinarian performing an Artificial Insemination	2 points
5.9	Demonstrate the correct way to show a breed at halter.	2 points
6.30	Demonstrate how to high line a horse.	1 point
6.31	Demonstrate how to saddle a pack horse.	2 points
7.7	Demonstrate how to measure an English and a Western saddle.	1 point each
7.8	Demonstrate how to saddle English or Western.	1 point each
7.14	On a horse, demonstrate how to fit one of the styles of bridles - western curb, snaffle, hackamore, pelham, english snaffle, full double bridle.	1 point each
7.20*	Draw a plan for a saddle rack. Repeatable for different plans and types.	2 points each
7.21*	Construct a saddle rack for your own tack room.	5 points each
7.22*	Make or sew something that you can use for your horse or yourself.	3 points each
7.23	Demonstrate proper care of clippers.	2 points
8.4	Demonstrate the proper way to lunge a horse.	2 points
8.5	Demonstrate the way to mount / dismount a driving vehicle.	1 point
8.6	Demonstrate the proper way to mount / dismount a horse.	1 point
8.9*	Participate in a riding / driving / vaulting lesson. List dates (10 lessons max / year).	2 points each
8.10	Demonstrate how and where to hold your hands when riding with each of the following - split reins, romel reins, english single, english double.	1 point each
8.11*	Participate in a judge's school or clinic for judges.	3 points
8.14	Demonstrate how to harness a horse: light and heavy harnesses.	3 points each
8.17 / \$	Draw a driving course.	2 points



NUMBER	TASK DESCRIPTION	POINTS
2.4*	Watch a horse-related film of your choice. Limit of 5 tapes a year.	3 points each
2.31	Watch a video about imprinting.	3 points

DATE	NAME OF VIDEO	AUTHORIZED SIGNATURE	POINTS



NUMBER	TASK DESCRIPTION	POINTS
3.5*	Help take care of a friend's barn or animals for at least two days. Maximum of 6 times per year.	2 points each

DATE	NAME OF BARN / RANCH / ANIMAL(S)	AUTHORIZED SIGNATURE	POINTS



NUMBER	TASK DESCRIPTION	POINTS
16.1*	Promote the Youth Merit Program to a friend. For each one who enrolls in the program, you receive 2 points.	2 points

DATE	FRIEND'S NAME	AUTHORIZED SIGNATURE	POINTS



CHURCH



Church is a big part of many communities. You can earn one point (Task 14.10*) for each time that you attend church this year (maximum of 12 times). Please list the dates below and have a member of your clergy sign off the task.

DATE	AUTHORIZED SIGNATURE	DATE	AUTHORIZED SIGNATURE

TOTAL POINTS FOR 14.10: _____

OTHER STUFF

NUMBER	TASK DESCRIPTION	POINTS
9.23	Watch equestrian portion of Olympics or other prominent horse event on TV or video.	3 points

DATE	NAME OF EVENT	AUTHORIZED SIGNATURE	POINTS

NUMBER	TASK DESCRIPTION	POINTS
9.59	Create a poster (at least 16" x 20") to promote WSH and display at a WSH-Approved event.	3 points

DATE	TITLE OF POSTER	AUTHORIZED SIGNATURE	POINTS

